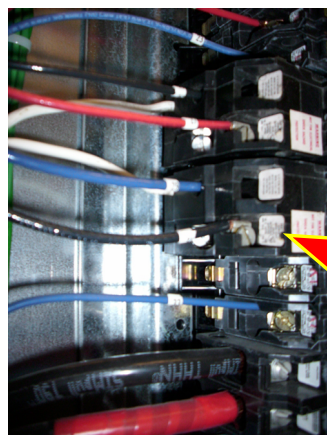
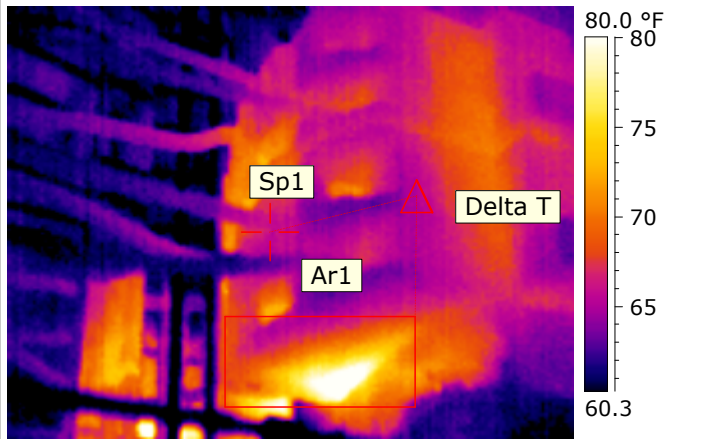


Photo and Identification



Location	Maine electrical room
Equipment	Panel L1
Type	Distribution panel, ckt 25-31, shunt trip breakers
Fault	Class 1
Recommendation	None

Thermogram



Atmospheric Temperature	64.0 °F
Image Camera Type	ThermaCAM E45
Emissivity	0.86
Ar1 Max. Temperature	86.2 °F
Sp1 Temperature	65.5 °F
Delta T Value	20.7

Analysis & Recommended action:

The shunt trip breakers, 25-31, on panel L1 are displaying elevated temperatures relative to the other breaker nearby; however, this is a byproduct of the circuits under load.

Recommendation: Continue annual surveys to maintain properly functioning electrical distribution system.

Inspected by :

Signature:.....

date:

Repaired by:.....

date:

Comment:.....